

MODULE COMBINATIONS					DIMENSIONAL CHART						
SCALE SIZE	FIRST REF "D" DIM	MIDDLE REF "E" DIM	MIDDLE REF "F" DIM	TERMINAL REF "G" DIM	"A" FDN LENGTH	"B" OVERALL LENGTH	"C"	"D"	"E"	"F"	"G"
60'	15'	15'	15'	15'	60'-2"	60'-1"	59'-6"	14'-10 1/2"	14'-10 1/2"	14'-10 1/2"	14'-10 1/2"
65'	17.5'	15'	15'	17.5'	65'-2"	65'-1"	64'-6"	17'-4 1/2"	14'-10 1/2"	14'-10 1/2"	17'-4 1/2"
67.5'	17.5'	15'	17.5'	17.5'	67'-8"	67'-7"	67'-0"	17'-4 1/2"	14'-10 1/2"	17'-4 1/2"	17'-4 1/2"
70'	17.5'	17.5'	17.5'	17.5'	70'-2"	70'-1"	69'-6"	17'-4 1/2"	17'-4 1/2"	17'-4 1/2"	17'-4 1/2"

NOTES:

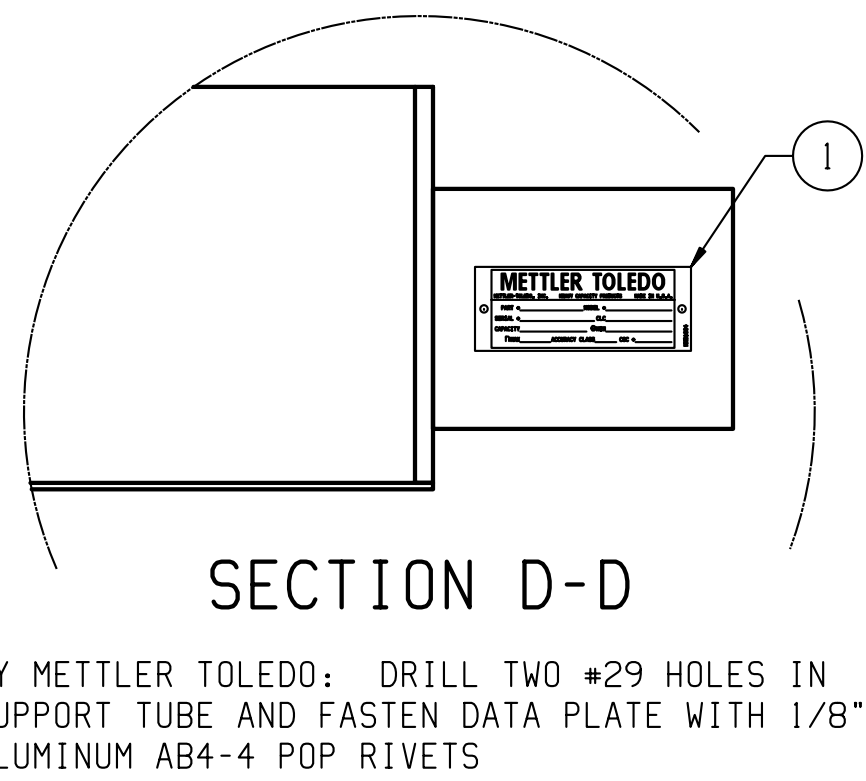
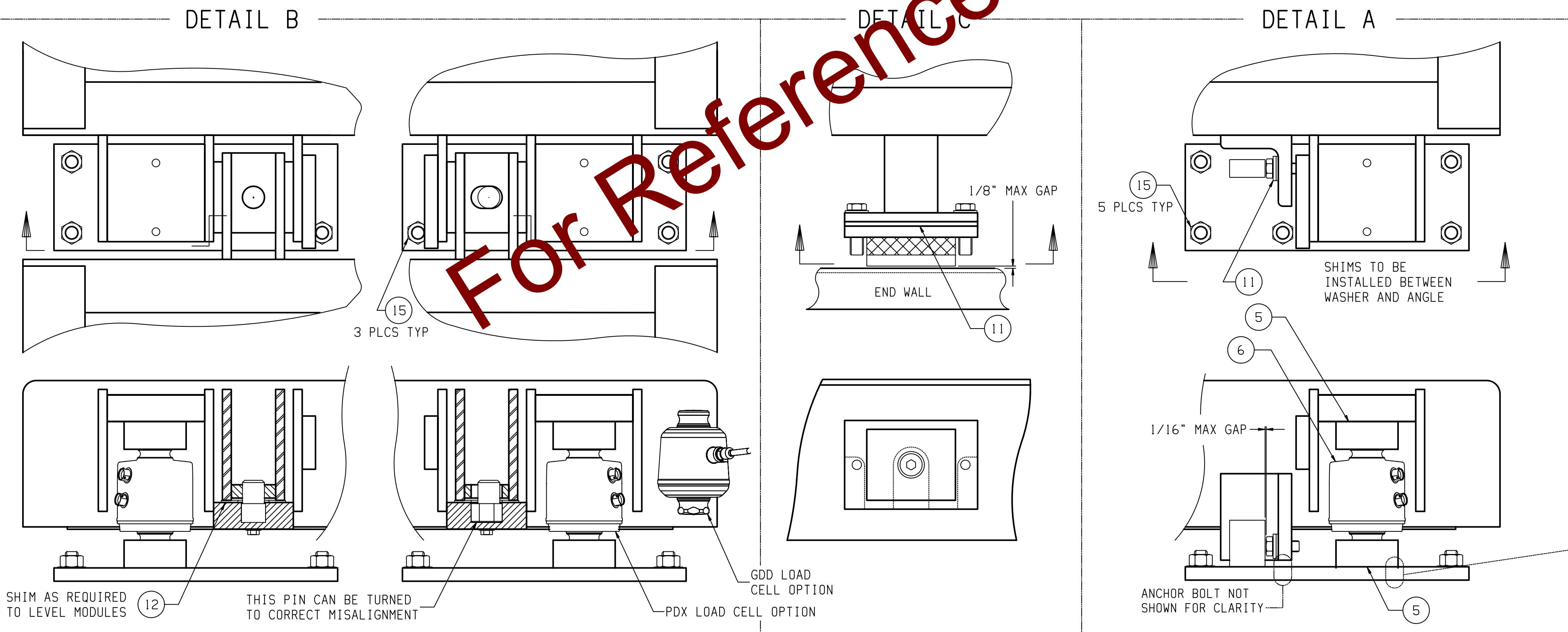
- FOUNDATION LENGTH DIMENSION SHOWN IS NOMINAL. ACTUAL TOLERANCE IS -0 +1"
- APPLY LOCTITE #242 TO ALL GAP COVER BOLTS
- APPLY A 1/4" BEAD OF DIELECTRIC COMPOUND IN THE MALE CONNECTOR OF POWER CELL BEFORE FINAL CONNECTION.
- IF DIELECTRIC COMPOUND BECOMES CONTAMINATED, CLEAN CONNECTOR WITH 68004258 CONNECTOR CLEANER. REAPPLY NEW COMPOUND TO THE CONNECTOR.

CONCRETE NOTES:

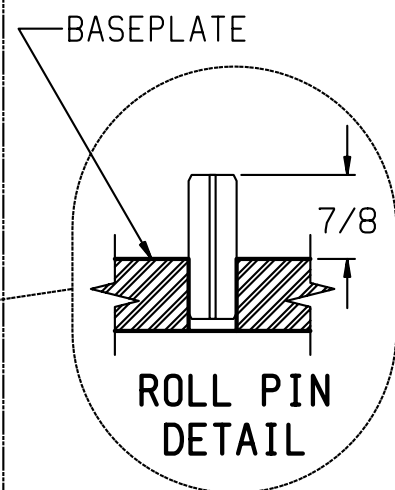
- USE 4000 PSI CONCRETE AT 28 DAY AGE. AIR ENTRAINMENT SHALL BE 5%-7%. MAXIMUM AGGREGATE SIZE IS 3/4". MAXIMUM SLUMP AS PLACED SHALL BE 4".
- CONCRETE SHALL BE DIRECT CHUTE PLACED AND THOROUGHLY CONSOLIDATED USING A SPUD TYPE VIBRATOR.
- USE OF CALCIUM CHLORIDE ADMIXTURE IS NOT PERMITTED.
- AFTER FINISHING, A STYRENE BUTADIENE TYPE (30% SOLIDS MIN) CURING COMPOUND SHALL BE APPLIED. EXAMPLES: SUPER FLOOR COAT OR SUPER PLOICURE BY EUCLID; MASTER SEAL 66 BY MASTER BUILDERS.
- REFER TO METTLER TOLEDO SPECIFICATION 61807824 FOR FURTHER INFORMATION.
- ESTIMATED CONCRETE PER MODULE IN CUBIC YARDS. (REF ONLY)  
15' X 11' = 3.8    17'6 X 11' = 4.5

IMPORTANT:

THE INTERIOR SURFACE OF ALL LOAD CELL RECEIVERS (BOTH TOP AND BOTTOM) MUST BE GREASED WITH 68004326 DURING CELL INSTALLATION.



BY METTLER TOLEDO: DRILL TWO #29 HOLES IN SUPPORT TUBE AND FASTEN DATA PLATE WITH 1/8" ALUMINUM AB4-4 POP RIVETS



16	1	68004258	MTX CLEANER, CONNECTOR
15	38	68004325	ANCHOR BOLT EXPANSION 3/4-10 x 5.5
14	4	30465417	CAPPLUGS KOP 7560CD
13	1	30236780	INSTALL KOP VTX2X1 FLUIDS 3-4 MODS
12	2	30465416	COUPLING KOP 7560
11	1	30465415	CHECKING KOP 7560
10	1	61086723 30352600	KOP PDX WIRING 10LC D2J7 KOP GDD WIRING VTX2X1/7560 4-MOD
9	1	TERM	STANDARD TERM MODULE
8	2	MID	STANDARD MIDDLE MODULE
7	1	FIRST	STANDARD FIRST MODULE
6	10	42904891 72236271	LOAD CELL, PDX, 50+ LOAD CELL, GDD, 30+
5	5	30465438 30465439	LOAD CELL ASSEMBLY 7560 KOP PDX 2LC LOAD CELL ASSEMBLY 7560 KOP GDD 2LC
4	2	68004241	BUMPER BASEPLATE RIGHT
3	2	68004240	BUMPER BASEPLATE LEFT
2	6	68004239	BASEPLATE
1	1	61071325	DATA PLATE

ITEM	QTY	PART NUMBER	DESCRIPTION
MAJOR BILL OF MATERIAL			
REV	CHANGE	BY	DATE
A	CORRECTED MOD ASY SUFFIX IN UPPER LEFT VIEW	CHD	11/07/11
B	UPDATED N109 WAS 209105 ADDED GDD AND VC KOP	NLD	02/24/18
SCALE .25			
DATE 11/01/11			
DRN CMD   APPD KRS			
TITLE 7560CD GLO PDX/GDD 4-MOD			
UNLESS OTHERWISE SPECIFIED, ALL DIMENSIONS ARE IN INCHES, AND DIMENSIONAL TOLERANCES ARE:			
FRACTIONAL	DECIMAL	ANGULAR	
.XX ±.02	.XX ±.02	±.5°	
1/32	.XX ±.005		
THIS PRINT IS FURNISHED WITH THE UNDERSTANDING THAT THE ESSENCE THEREOF WILL NOT BE REPRODUCED IN WHOLE OR IN PART WITHOUT WRITTEN AUTHORIZATION OF METTLER-TOLEDO, LLC. ALL DESIGNS ARE THE PROPERTY OF METTLER-TOLEDO, LLC, AND WILL BE PROTECTED BY PATENTS.			
61806485			
REV B			